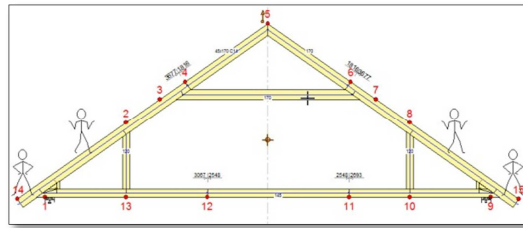


8. Kā sadalās slodzes mansarda kopnei?



Mansarda kopne kas izskatās šādi:

Un slodzes definētas šādi:

- LL 1
- LL 2
- LL 3

Truss

General | Section | Text box | Code | Pricing | Standard load | Material | AutoFit | Misc.

Dead load

Include truss weight

Transfer to TrussCon

M	Description	N/m ²
1	Top chord left	650
11	Top chord right	650
31	Bottom chord	300
51	Collar beam	300

Truss centre

Transfer to TrussCon

Dimension (mm): 900

Receive load transfer

Emit load transfer

Receive line load

Roving load

Live load

Type	N/m ²
LL 1	500
LL 2	2500
LL 3	500

* Transfer to TrussCon

Number of intermediate floor joists: 0

Uplift dead load

Uplift check

Description	N/m ²
Roof	580
Ceiling	270

OK Cancel

Slodzes pa kopni sadalās šādi:

